

# Polyform edgeboards



*Protect and reinforce circular, cylindrical or complex shapes products.*

## Products

### KPP:

Cardboard-covered extruded edgeboard.

### Armaflex:

100% cardboard edgeboard.

### Litec®:

Complex cardboard edgeboard.

## Dimensions

(in mm)	KPP	Armaflex	Litec®
<b>Wings</b>	from 35x35 to 90x90 75x45 / 110x70 / 120x80	from 33x33 to 100x100 75x45 / 110x70 / 90x60	from 35x35 to 80x80 75x45 / 85x65 / 110x70
<b>Thickness</b>	2,8 / 3	from 1,8 to 3	from 1,5 to 4
<b>Length</b>	from 1000 to 7000	from 1000 to 7000	from 1000 to 7000

## Characteristics and variants



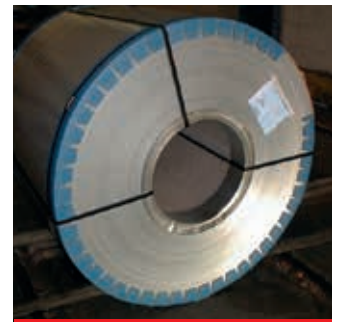
- Notched rolls with 90° angle depending on quality



- Flat notched roll with 180° angle depending on quality



- Variable notch



- Printable



- Asymmetrical wings



- Example of application



- Example of application